
1871 / 1971

*Businesses
Haeger Pottery*
Haeger

the Craftsmen
for a Century

THE STORY OF HAEGER'S FIRST ONE HUNDRED YEARS
THE HAEGER POTTERIES, INC., DUNDEE, ILLINOIS 60118

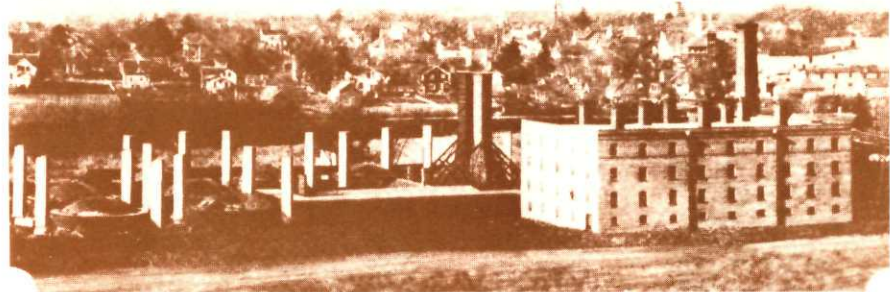


To commemorate this centennial achievement, it's our pleasure to bring you a short pictorial story of Haeger. In it we shall attempt to acquaint you with our early history and, as well, outline the basic steps that constitute manufacture of fine artware and lamps. As you read on, it is our hope that you will come to realize the nature and substance of Haeger, in essence a commitment to the tradition of finely crafted quality.

Few companies span a century. That Haeger Pottery has not merely survived, but truly thrived, is a tribute to leadership. Leadership shown by the four generations that headed the firm, and the leadership Haeger has demonstrated to the industry.

From founder David H. Haeger's Dundee Brick Yard in 1871, Haeger has progressed to its position today as a pace-setter in design and innovation. Haeger pottery is found anywhere in the world where selective good taste is evident.

One of David's sons, Edmund H. Haeger, assumed leadership of the Dundee factory and had the inspiration to begin the production of art pottery in 1914. He envisioned the use of lovely shapes in beautiful colors enhancing the homes of America (now international).



The earliest existing photo of Haeger plant and grounds, 1908.

A century long heritage of craftsmanship

In 1934, he built a complete working ceramic factory at the Chicago World's Fair, showing both the ancient and the contemporary modes of production.

There is tradition here. Joseph F. Estes, named general manager in 1938, and president in 1954, is a third generation leader of Haeger Pottery. Expansion and diversification have been the fruits of his guidance. The Royal Haeger line of artware and lamp bases he introduced is one of the most respected in the field. In 1939, he was instrumental in starting the Macomb Pottery plant, which produces a complete line for florists.

The fourth generation is represented by a son, Nicholas Edmund Haeger Estes, General Manager of the Royal Haeger Lamp Company, Macomb division. This second plant, open-

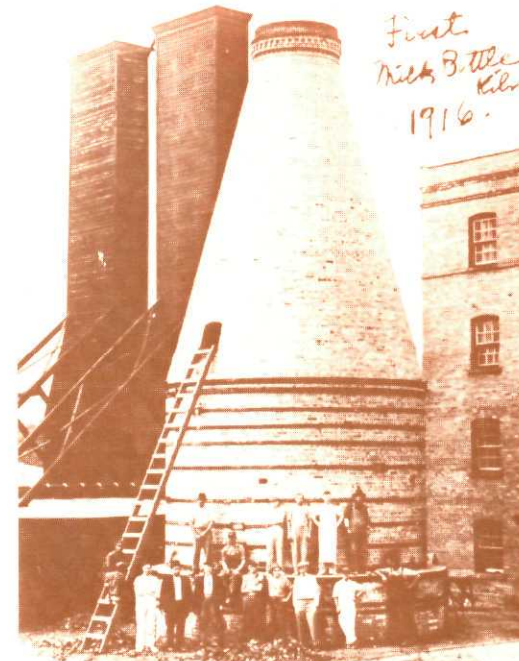
ed at Macomb, Illinois in 1969, is devoted exclusively to the manufacture of lamp bases and shades, augmenting the lamp company facilities at Dundee.

Though the company is a century old, its outlook is not. Our hundred years of experience is yours to benefit from. We are not looking back at the past century--only ahead to the next.

No company survives without the support of its customers and friends. And we pause during this benchmark in our history to offer our warmest thanks to those much appreciated friends. We pledge to each of you that we will do all possible to continue to lead, to innovate, to explore with just one goal in mind: to serve you much better with each passing year in our second century of growth.



1912, the office of the Haeger Pottery.



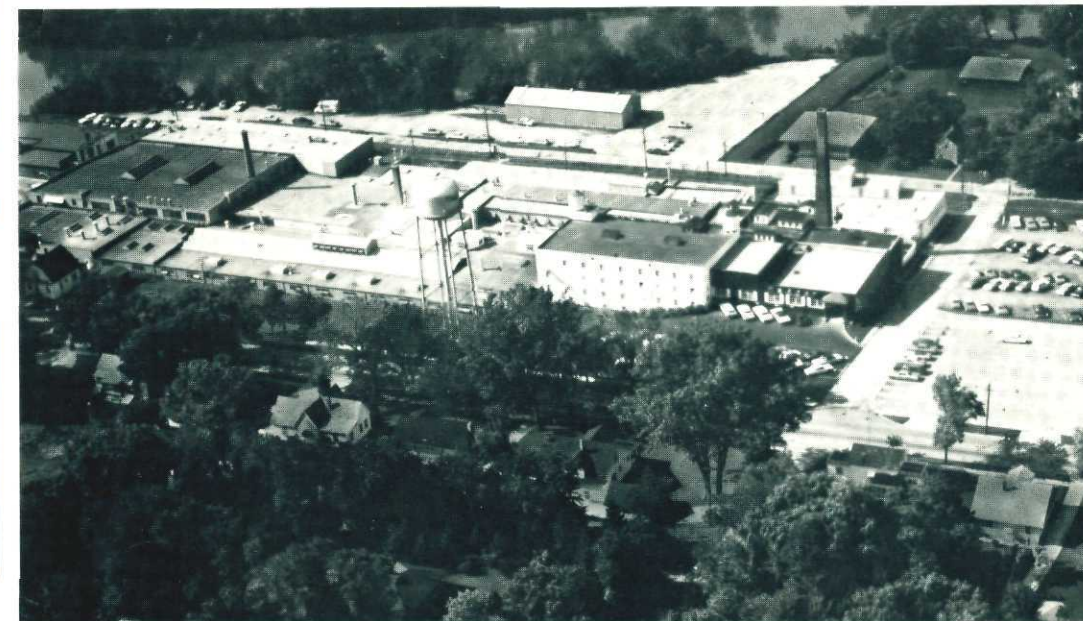
The first bottle kiln in operation, 1916.



David H. Haeger



Edmund H. Haeger introduced Art Pottery in 1914.



Haeger's present day facility at Dundee, Illinois.

Mr. Joseph F. Estes, President
 Much of Haeger's substantial
 growth has occurred under
 Mr. Estes' direction both while
 serving as General Manager
 and as President.



Every single lamp or piece of artware goes through many steps from the time it originates as a fleeting idea in a designer's mind.

The following photos will outline briefly some of the major steps in manufacture. Certainly no photo essay can take the place of personal observation, and tours are available to give a first-hand view of this fascinating process.



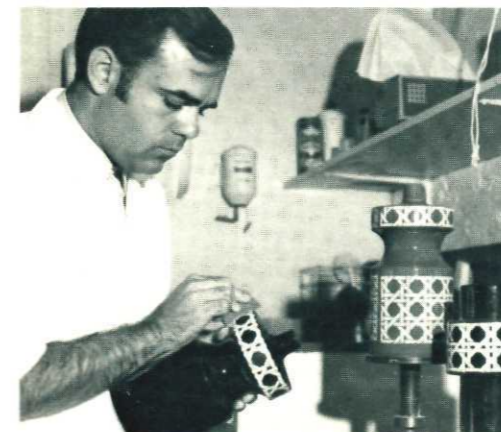
Designs first develop as ideas on paper.



Three dimensional handworked models are made of promising design ideas.



Precise models have to be made for those pieces that will eventually be produced.



Glazes and surface treatments are constantly being explored and developed by Haeger personnel.



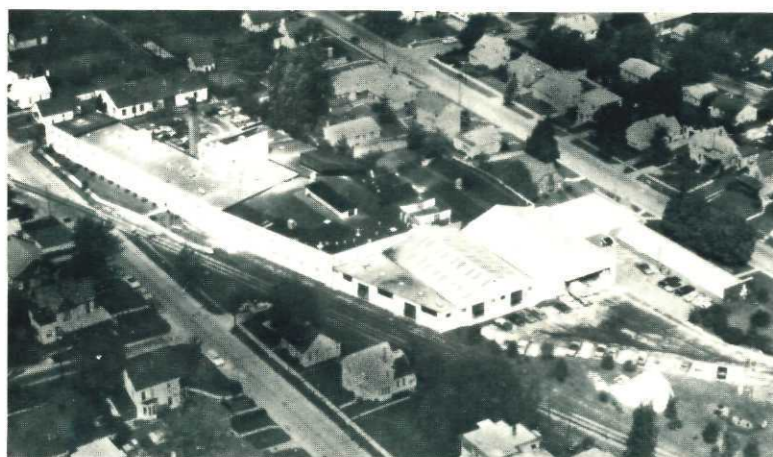
The block and case is being poured with plaster in order that production molds can be produced.



Slip, liquid clay, is pumped into production molds.



As a contrast, above is shown the early, slow process of carrying and pouring slip.

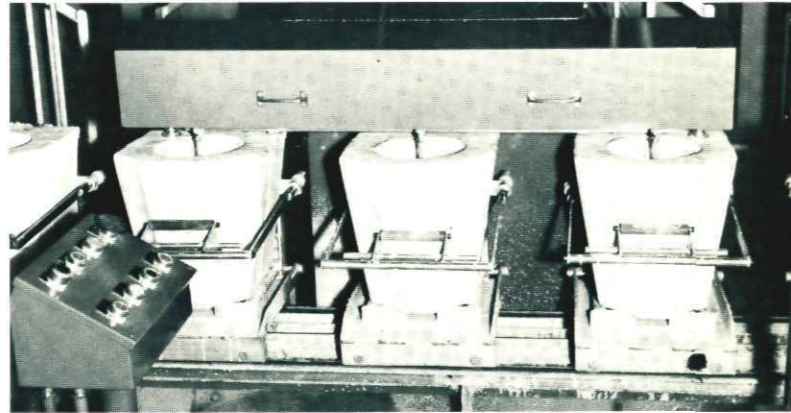


The Macomb, Illinois artware manufacturing facility, established 1939.



Haeger's lamp production plant in Macomb, in use since 1969.

Through constant research and development, Haeger is continually developing new methods to help production and better the quality of Haeger.

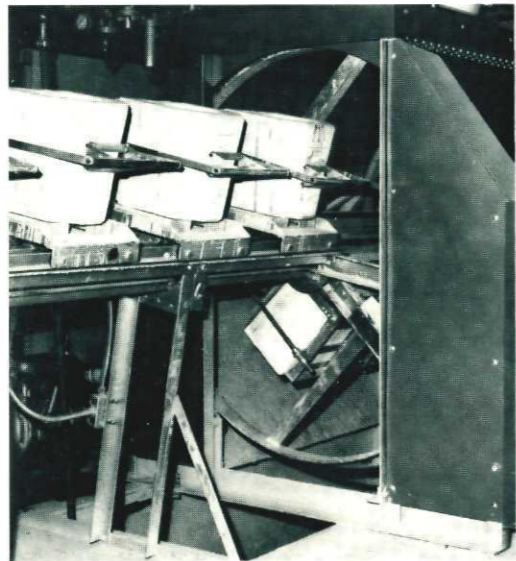


Haeger's new automatic mold filling operation.

After a certain thickness of wall has built up from solidified slip, the excess is poured out of the mold.



After standing, the mold is opened and the delicate clay shell is removed from the mold.



Molds are dumped with no human hands touching them.



A jigger wheel is the outgrowth of a potter's wheel. Here we use a Plaster of Paris mold and a putty-like clay and form the piece of pottery according to the inside of the mold.



An automatic jigger wheel which produced automatically a piece of pottery according to the inside of the mold.



Certain hollow-ware designs can be made by a pressing process. Haeger uses this on certain items.



All mold marks and any other slight imperfections are eliminated by hand finishing.



Highly developed glazes are applied by hand to each piece to assure fine quality.

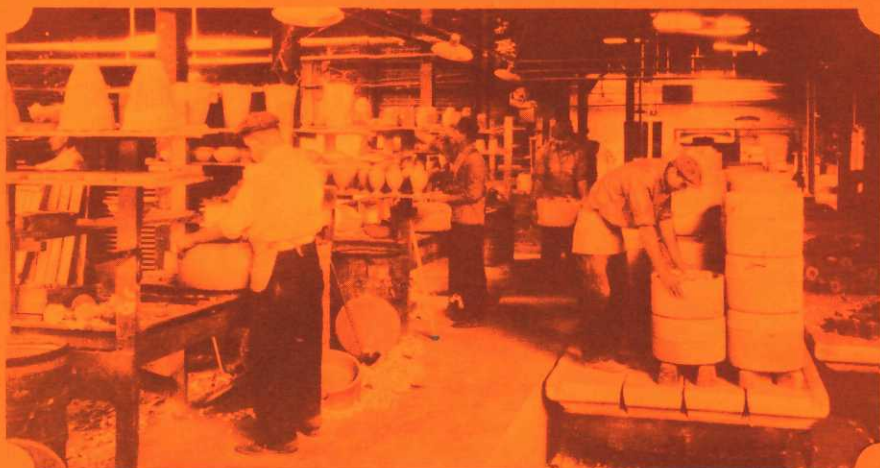


Each piece of Haeger ware is closely inspected and worked on as it progresses along its path toward completion.





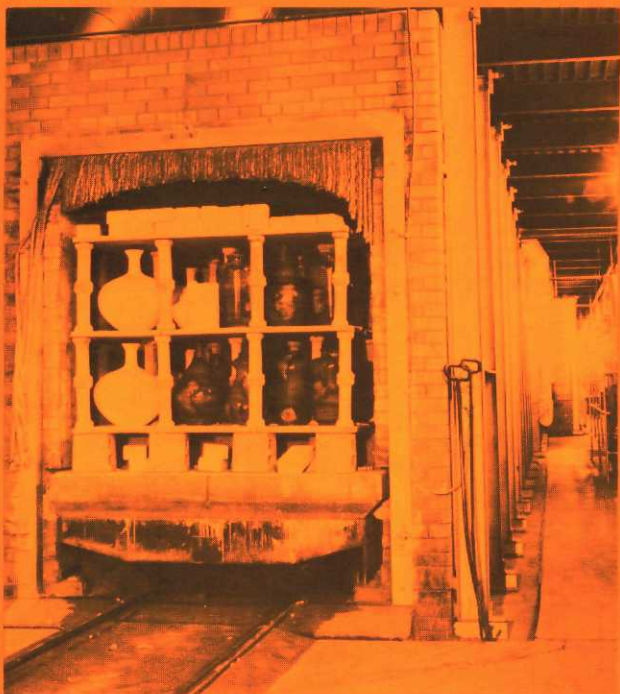
When the glaze has dried, kiln cars are loaded with ware to be fired.



Again, in contrast, earlier days saw no "shelves" on kiln cars. Each car in this case was loaded with round receptacles (saggers) which contained the ware, a slow tedious task.



Much of today's ware is finished with features such as gold leaf or antiquing—all by skilled hands.



At the end of a 24 hour trip through Haeger's tunnel kilns, the ware is now fired and ready for final inspection.

You're invited to come and see for yourself this fascinating process. You will notice the forward looking features of our operation, but even more, we're certain you'll be impressed by our attention to detail and the care which is taken to assure Haeger fine quality. It's a tradition! After all, we are the **Craftsmen for a Century!**

THE HAEGER POTTERIES, INC.
SEVEN MAIDEN LANE
DUNDEE, ILLINOIS 60118
(312) 426-3441

